

OSHA TRAINING June 2021

- **EMERGENCY ACTION PLANS**



FIRE EMERGENCY

- **If you discover a fire:**
- 1. CLEAR anyone in immediate danger
- 2. CONFINE the fire by closing all doors and windows to the area.
- 3. CALL THE FIRE DEPARTMENT and notify supervisor.



Fire emergency continued

- Use fire extinguisher IF it is safe to do so.
- **NEVER attempt to put out a fire alone.** Be sure to use the right type of extinguisher.
- **ACTIVATE** a manual pull station to sound the alarm, if necessary.
- **EVACUATE** if necessary. Walk to the closest safe exit. Proceed to the safe refuge area



PASS: using portable extinguishers

Keep your back to a clear exit and stand six to eight feet away from the fire, and remember the acronym PASS.

Pull the pin that unlocks the operating lever.



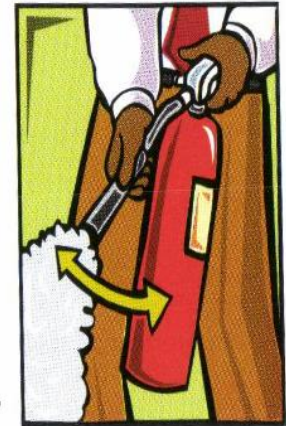
Aim low Point the extinguisher nozzle or hose at the base of the fire.



Squeeze the lever above the handle to discharge the extinguishing agent. To stop the discharge, release the lever.



Sweep the nozzle or hose from side to side. Keep the extinguisher aimed at the base of the fire and sweep back and forth until the flames appear to be out.



- Watch the fire area. If the fire re-ignites, repeat the process.
- Have the fire department inspect the fire site, even if you think you've extinguished the fire.

If the fire does not go out, get to a safe area.

Fire emergency continued...again

- If you hear the fire alarm:
- Feel the door to see if it is hot. If not hot, open cautiously. Stand behind the door; be prepared to close quickly.
- If there is no smoke present, proceed to the nearest stairwell Exit. Follow safe stairwell procedures; evacuate and proceed to the Safe Refuge Area.
- If you do encounter smoke, crawl on your hands and knees along the wall to a safe Emergency Exit. Evacuate the building and proceed to the Safe Refuge Area.
- 4. Follow instructions from Emergency Personnel.



Fire emergency continued...again

- **If the door is hot:**
 - **1. DO NOT OPEN IT.**
 - 2. Use an alternate door, if safe.
 - 3. If no alternate door is available, call Fire Department. Give them your exact location and all known facts.
 - 4. Seal the bottom of the door with cloth material to keep out smoke.
 - 5. If water is available, wet cloths and seal the door and any vents.
 - 6. Retreat. Close as many doors between you and the fire as possible.
 - 7. Signal at the window using brightly colored material.



Fire emergency continued...again

- **8. If there is smoke in the room:**
 - Stay low - air is cooler and cleaner closer to the floor.
 - Hold a wet cloth over your mouth and nose.
 - Do not break the window - once broken it cannot be closed. If there is smoke outside the window, the smoke may enter into the room you are in. Breaking a window should only be done as a last resort.



Remain calm. Help is on the way.

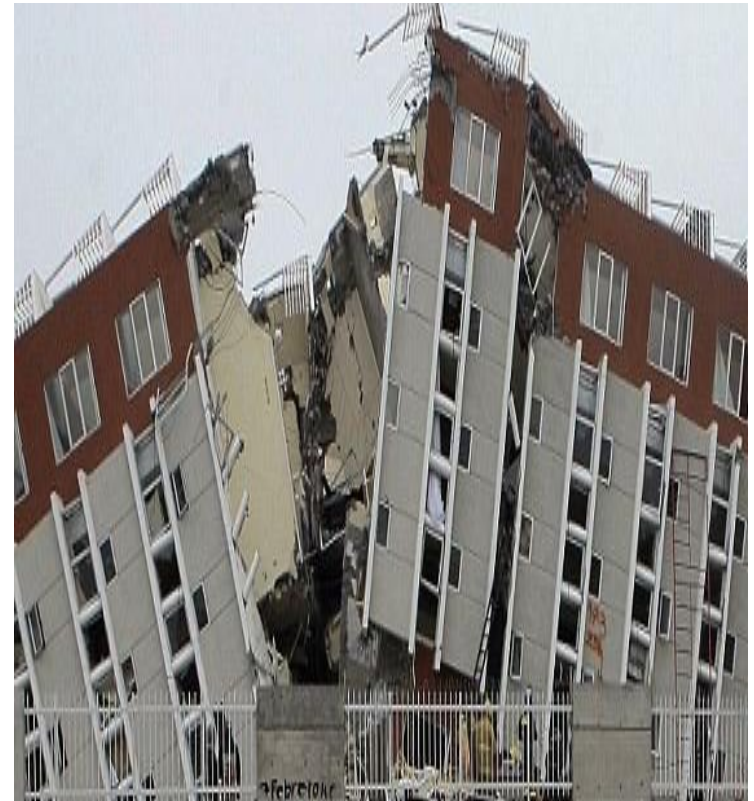
EARTHQUAKE EMERGENCIES

- **After an Earthquake:**
 1. Check for injured and assist. Do not attempt to move a seriously injured person unless they are in immediate danger of further injury.
 2. Inspect suite for damage. Check for fires. Check utilities - gas and water leaks and electrical shorts.
 3. If you suspect a gas leak DO NOT use matches, cigarette lighters or turn on electrical switches or appliances. If you smell gas, contact Engineering and the Fire Department immediately.
 4. 4. Open doors carefully. Watch for falling objects.

EARTHQUAKE EMERGENCIES

continued

5. Wear shoes and gloves for protection from debris and broken glass.
6. Stay away from windows and glass.
7. Replace telephone receivers so telephone system will work. However, telephones should be used for emergency calls only.
8. Listen to radio for emergency reports.
9. Do not cause panic with the spreading of rumors regarding the building condition, extent of damage and injuries, etc.
10. Cooperate with public officials.
11. BE PREPARED FOR AFTERSHOCKS.



EARTHQUAKE EMERGENCIES

continued

- WHEN CAN OCCUPANTS GO HOME?
- It is best that in the event of an earthquake or community wide disaster during normal working hours, that all occupants should remain at work. **It may be too dangerous to attempt to go home right away.** Encourage occupants to listen to radio reports for areas and roads that have sustained damage. Discourage leaving until they know roads are undamaged and traffic is moving.



EARTHQUAKE PREPAREDNESS

- It is recommended that you have:
- A First Aid Kit (check & maintain quarterly)
- A radio and flashlight with extra batteries (check & maintain quarterly)
- Heavy gloves in case of broken glass
- Sturdy shoes, preferably with rubber soles
- If you are on medication, have a 72 hour (minimum) supply with you at all times
- Water - store extra bottles and rotate quarterly
- Packaged or canned food - survival rations



EARTHQUAKE PREPAREDNESS

- Have a plan for reuniting your staff. All staff members should have the telephone number of an out-of-state contact person and instructions to call them as soon as possible to report their location and condition.
- Reduce non-structural hazards. Secure bookcases, filing cabinets, etc. to the wall. Remove all heavy objects from high shelves and secure liquids to prevent spillage.



During an Earthquake:

- **DUCK** Get under a desk, table or other sturdy object and hold on. Or brace yourself against a wall in the core of the building.
- **COVER** your head and **HOLD** on to your protection.
- Stay away from windows, bookcases, filing cabinets and any objects that may fall or shatter. Do not dash for exits, since stairwells may be damaged. Do not use elevators until they are checked for safety.
- • Do not be surprised if electricity goes out.
- • **Do not smoke or use matches or lighters in case of gas leaks.**



BOMB THREATS

- **Upon receipt of a bomb threat, immediately contact the Police Department by dialing 911.**
- **The recommendation of local authorities will govern any action taken.**

